

Ambulance Patient Offload Time Special Seasonal Report

2023-24
Seasonal
Report



Week 09 (02/25/24 – 03/02/24)

Riverside County EMS System Status

Week 09 Summary

9-1-1 Responses	↓	4,799 9-1-1 responses — 2.6% DECREASE from the previous week - Pg 3
9-1-1 Transports within Riverside County	↓	3,285 9-1-1 transports — 2.4% DECREASE from the previous week - Pg 3
Ambulance Patient Offload Delay (APOD)	↓	556 Ambulance Patient Offload Delays — 14.5% DECREASE from the previous week - Pg 3
APOD Hours	↓	226.6 Ambulance Patient Offload delay hours — 24.8% DECREASE from the previous week - Pg 4
APOD Compliance	↑	83.1% APOD Compliance — 3.0% INCREASE from the previous week - Pg 2
Ambulance Patient Offload Time (APOT) >90 min	↓	61 transports with APOT >90 min — 24.7% DECREASE from the previous week - Pg 5
Emergency Treatment Services	↑	97 ETS transports — 41% INCREASE from the previous week — 73% OFFLOAD < 30 min - Pg 6
EMS influenza-like-illness (ILI)	↓	85 ILI responses, 26.7% DECREASE from the previous week- ABOVE 2 STD from Baseline— Page 8

This report and all published APOT reports can be found at:

<http://www.rivcoready.org/remsa/data-and-reports/current-reports>

Prepared by Riverside County EMS Agency – March 4, 2024

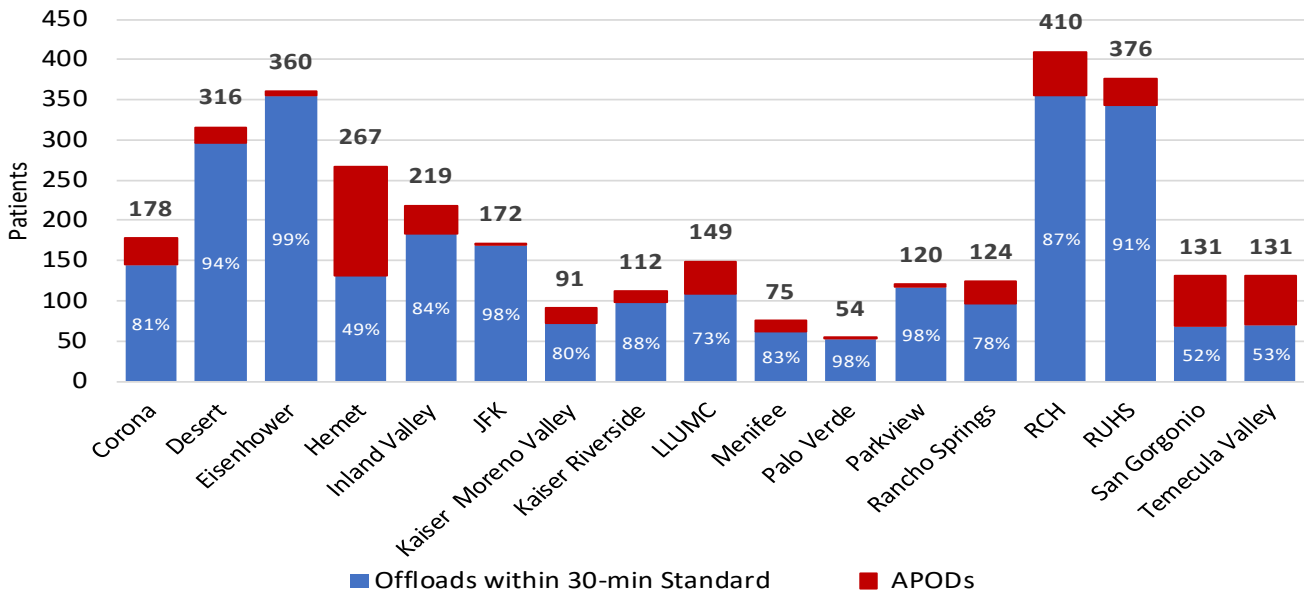
RIVERSIDE COUNTY EMS SYSTEM - SPECIAL SEASONAL REPORT

In an effort to monitor Ambulance Patient Offload Time (APOT) and influencing factors such as seasonal surge, Riverside County EMS Agency is publishing weekly reports. The following graphs and charts represent weekly aggregates of 9-1-1 Responses, Transports, and Ambulance Patient Offload Delays (APOD) across Riverside County. *(For more details on methods and definitions, reference the end of this report)*

TRANSPORT & AMBULANCE PATIENT OFFLOAD TIME BY HOSPITAL

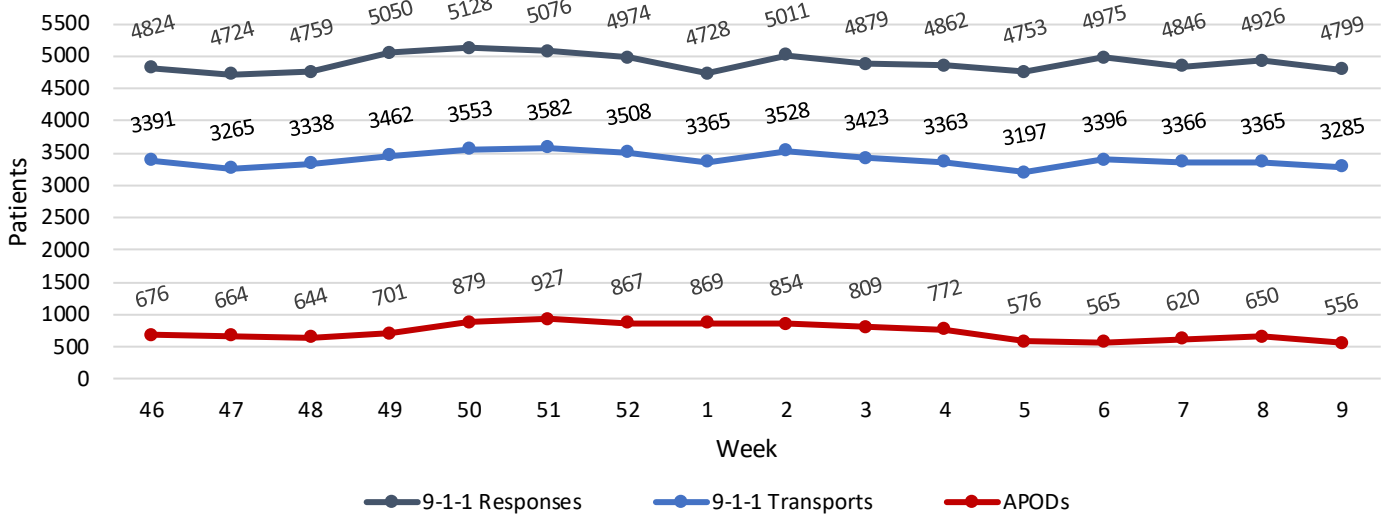
2024 WEEK 09					
	911 Transports	APOT	APOD Hours	APODs	APOD Compliance
Corona Regional Med Ctr	178	71:19:19	12:30:45	33	81.5%
Desert Regional Med Ctr	316	79:25:13	4:23:47	19	94.0%
Eisenhower Health	360	70:16:48	0:23:37	5	98.6%
Hemet Valley Hospital	267	176:37:39	61:04:46	135	49.4%
Inland Valley Med Ctr	219	79:53:27	20:09:23	35	84.0%
JFK Hospital	172	26:12:38	0:37:50	3	98.3%
Kaiser Hospital Moreno Valley	91	38:21:27	8:41:02	18	80.2%
Kaiser Hospital Riverside	112	33:46:46	3:44:13	13	88.4%
Loma Linda Univ Med Ctr Mur	149	66:37:23	13:40:50	40	73.2%
Menifee Med Ctr	75	28:08:03	3:40:31	13	82.7%
Palo Verde Hospital	54	8:56:55	0:11:38	1	98.1%
Parkview Community Hospital	120	30:38:05	0:11:45	3	97.5%
Rancho Springs Med Ctr	124	46:58:45	8:09:52	27	78.2%
Riverside Community Hospital	410	132:33:03	17:54:34	54	86.8%
Riverside University Health System	376	121:58:33	4:58:25	33	91.2%
San Geronio Mem Hospital	131	86:38:59	31:41:18	63	51.9%
Temecula Valley Hospital	131	88:25:49	34:34:09	61	53.4%
Totals	3,285	1186:48:52	226:38:25	556	83.1%

Transports and APOD Compliance by Hospital

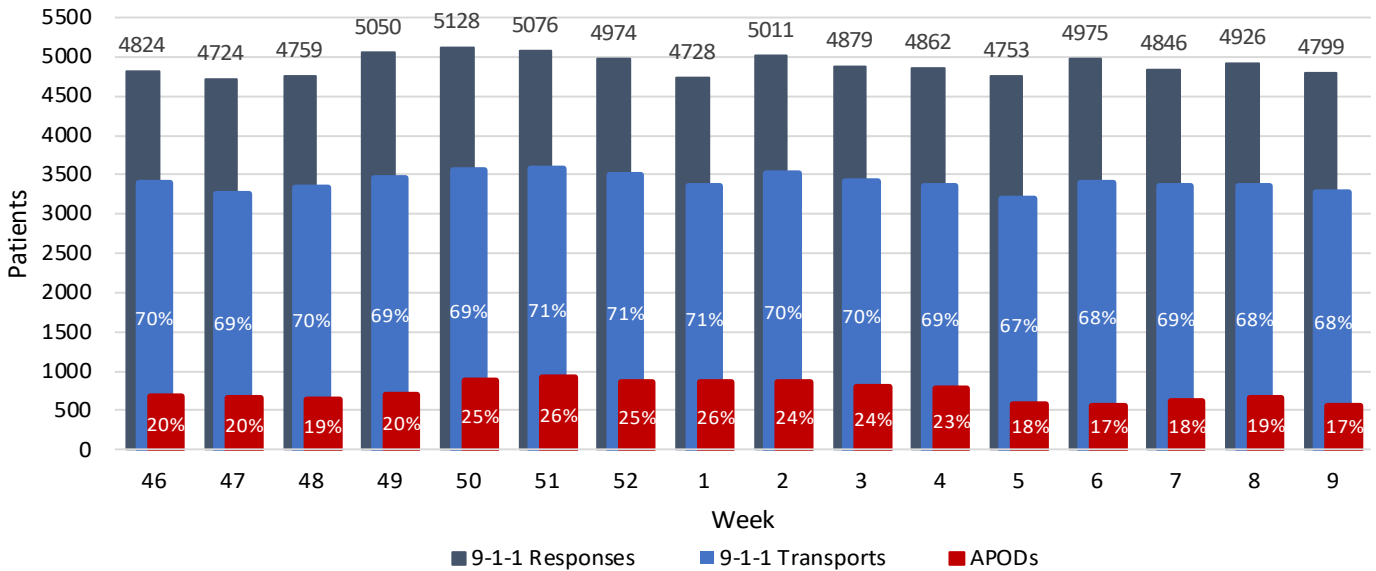


RESPONSES, TRANSPORTS, AND APOD OVER TIME

Weekly Transports and APODs
2023 Week 46 through 2024 Week 09



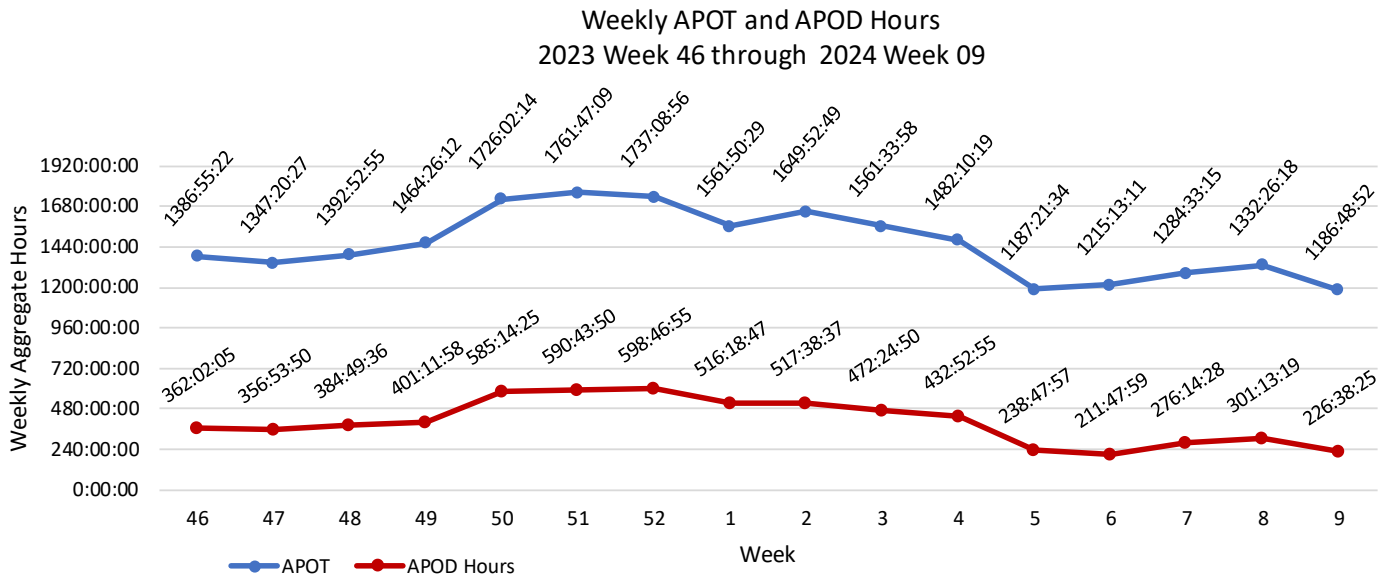
Weekly Transports and APODs
2023 Week 46 through 2024 Week 09



*Transports include only 9-1-1 transports to Riverside County hospitals

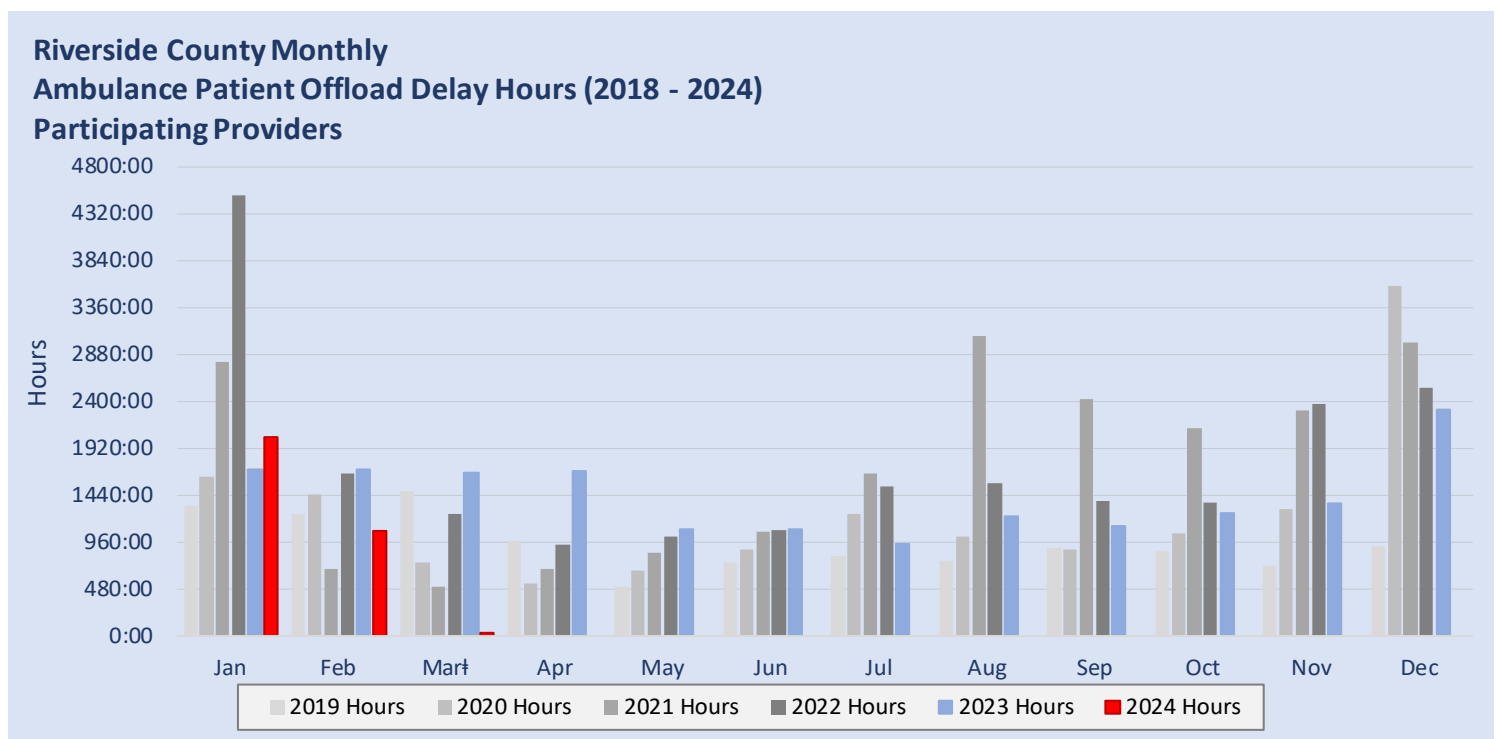
- During Week 09, there were a total of **4,799 ALS responses** in Riverside County—2.6% DECREASE from the previous week’s total of 4,926 responses.
- During Week 09, there were a total of **3,285 transports** in Riverside County— 2.4% DECREASE from the previous week’s 3,365 transports.
- During Week 09, there were a total of **556 APODs** in Riverside County— 14.5% DECREASE from the previous week’s total of 650 APODs.

The following chart represents weekly aggregate APOT and APOD hours (hh:mm:ss) for the past 16 weeks. APOT begins at patient arrival at hospital (eTimes.11) and ends when patient care is transferred to the hospital (eTimes.12). APOD calculation begins when APOT exceeds the 30-minute transfer of care standard defined in REMSA [Policy 4109](#).



- During Week 09, **APOT county-wide totaled 1186.8 hours** — 10.9% DECREASE from the previous week’s total of 1332.4 hours.
- County-wide **APOD hours for Week 09 totaled 226.6 hours**, a 24.8% DECREASE from the previous week’s total of 301.2 hours.

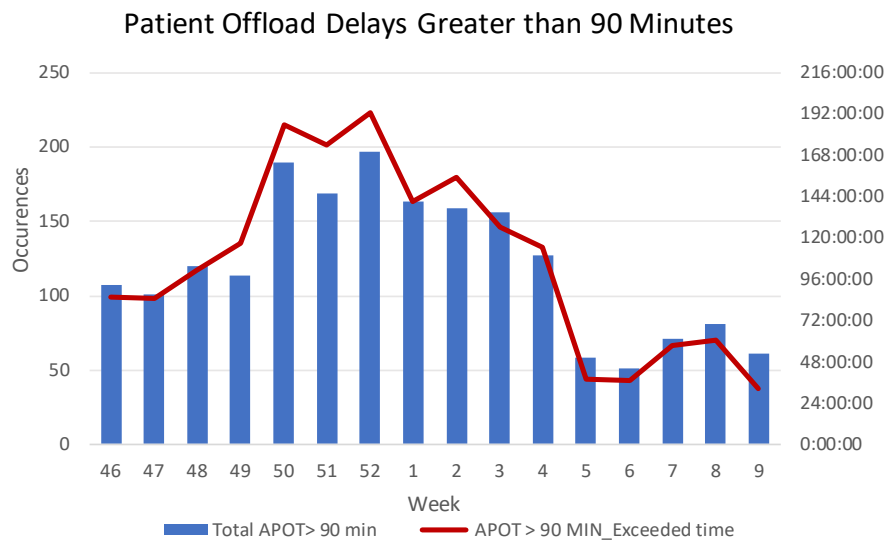
The data provided below illustrates the total APOD time (hh:mm) by month over the last five years. This chart is a summation of offload time delays only and excludes the initial 30-minute period defined as the standard transfer of care time.



*Mar† is a partial month

AMBULANCE REDIRECTION

REMSA [Policy 6104](#) allows redirection of ambulances away from hospitals experiencing significant Ambulance Patient Offload Delays (APOD) to the next most appropriate facility. *Significant* APOD is defined as a patient remaining on an ambulance gurney for **90 minutes or greater after arrival at the hospital** (APOT > 90 min). Standard transfer of care is 30 minutes or less (APOT < 30 min). Until the transfer of care is complete (patient is removed from the gurney and hospital staff assume care of the patient), ambulance crews must remain at the hospital and continue care. While patients held on excessive APODs are generally those classified as lower acuity, approximately one-third of the County's ~600 daily 9-1-1 medical responses are determined by dispatch as critical, requiring immediate medical attention (e.g., cardiac arrest, stroke, traumatic injury). As a result, excessive, or multiple APODs within the same service area impact ambulance timeliness and availability in the field posing direct risk to 9-1-1 patient safety. Ambulance redirection is one strategy to reduce the consequential backlog of EMS services which occurs when there are excessive ambulance delays at hospital emergency departments. Below is the Week 09 countywide breakdown of APOD occurrences where ambulances were documented as held for greater than 90 minutes before transfer of care.



- During Week 09, **61 ambulances were delayed greater than 90 minutes** — 24.7% DECREASE from the previous week's total of 81.

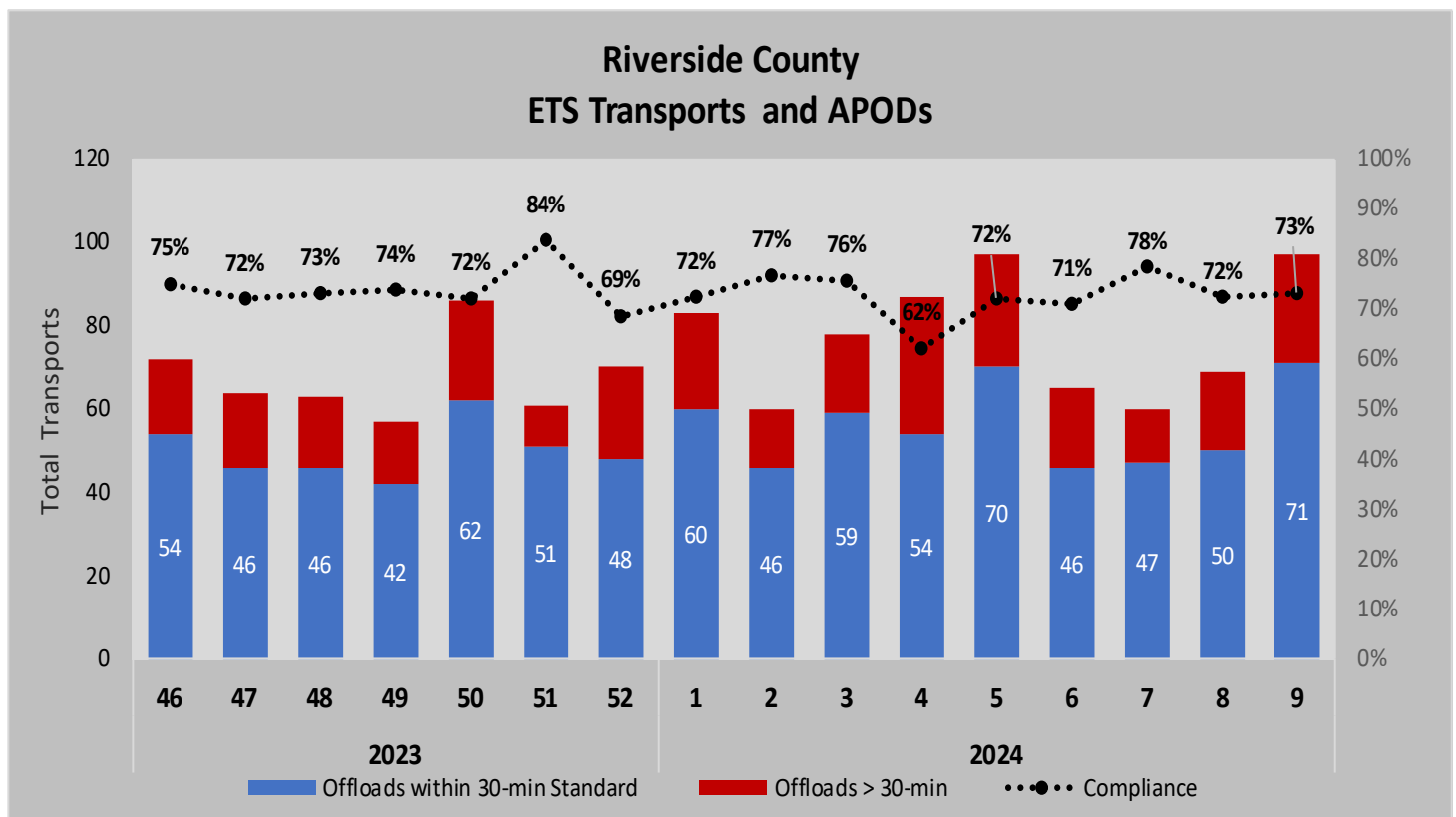
Facility	Total Time APOT > 90 min (HR: MM: S)	Total Incidents APOT > 90 min
Corona Regional Med Ctr	0:04:44	1
Desert Regional Med Ctr	0:00:00	0
Eisenhower Health	0:00:00	0
Hemet Valley Hospital	10:29:37	17
Inland Valley Med Ctr	3:59:55	7
JFK Hospital	0:00:00	0
Kaiser Hospital Moreno Valley	0:50:08	3
Kaiser Hospital Riverside	0:00:00	0
Loma Linda Univ Med Ctr Mur	3:12:05	3
Menifee Med Ctr	0:37:39	1
Palo Verde Hospital	0:00:00	0
Parkview Community Hospital	0:00:00	0
Rancho Springs Med Ctr	0:11:50	2
Riverside Community Hospital	1:31:30	3
Riverside University Health System	0:00:00	0
San Gorgonio Mem Hospital	4:26:44	11
Temecula Valley Hospital	7:04:22	13
Grand Total	32:28:34	61

EMERGENCY TREATMENT SERVICES

Transports to Emergency Treatment Services (ETS) comprise over 3% of overall transports. This is significant enough to impact the EMS system and, therefore, warrants reporting. However, transports to ETS do not meet the EMSA definitions for APOT (see page 10); therefore, they are not included with the previous APOT aggregates.

ETS Snapshot- 2024 Week 09					
	Transports to ETS	Total Offload Time	APOD Hours	Offload >30min	Compliance
Emergency Treatment Services	97	43:20:33	6:22:52	26	73.2%

The chart below represents Riverside County’s total number of *ETS ambulance transports, patient offload delay (APOD), and percent compliance* for the current week and a rolling 15 weeks prior.

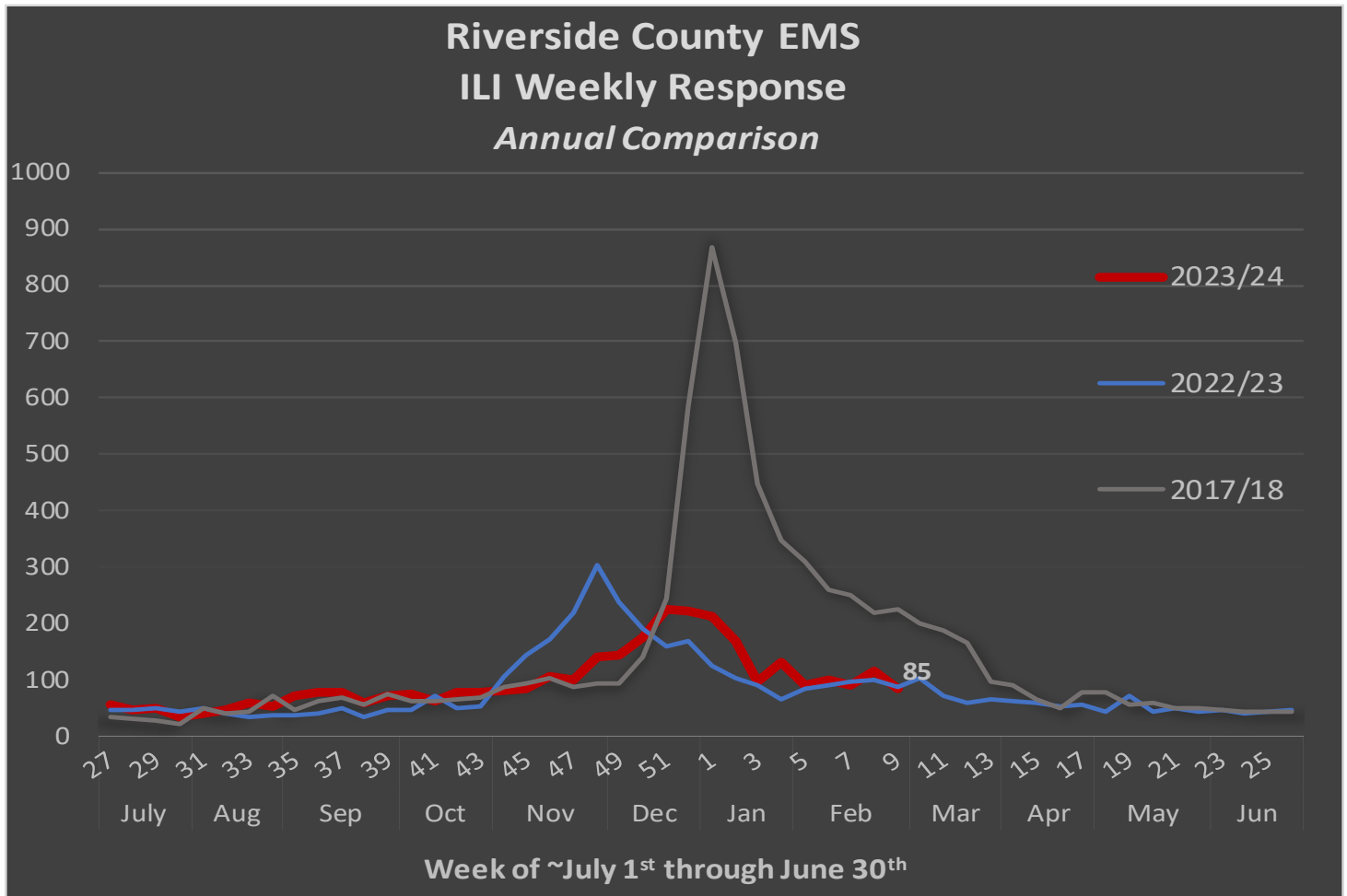


- During Week 09, there was a total of **97 transports to ETS** – a 41% INCREASE from the previous week.
- During Week 09, **27% resulted in offload > 30 minutes** – 1% LESS than the previous week.

ILI - INFLUENZA-LIKE ILLNESS RESPONSE

While influenza is detected year-round, it is most common during fall and winter. Increases in influenza-like-illness (ILI) generally begin in October and peak sometime between December and February (<https://www.cdc.gov/flu/about/season/flu-season.htm>).

Hospital Emergency Departments (EDs) generally experience an increase in volume during flu season which, in turn, can impact Ambulance Patient Offload Time. The purpose of the Riverside County EMS system ILI (Influenza-like Illness) reporting is to improve tracking of influenza-related activity and facilitate EMS preparedness in the event of a significant surge event, similar or greater than that observed during the 2017-18 flu season.



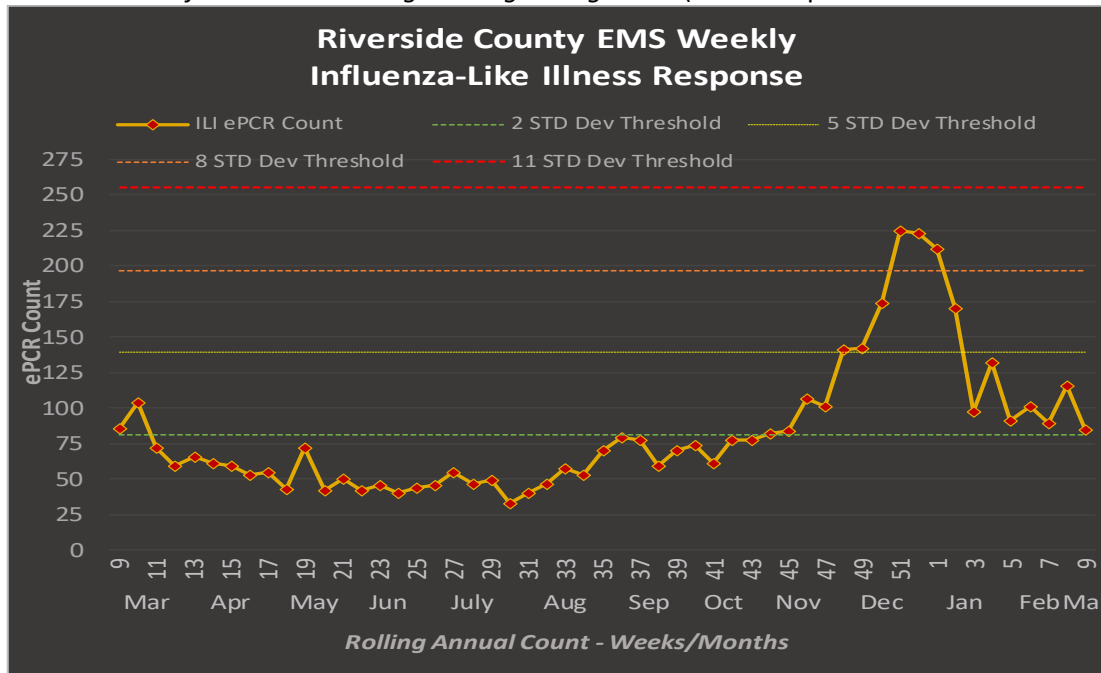
Week 40 (~October 1st) is defined by the Center for Disease Control (CDC) as the expected start of increasing influenza activity, or “flu season”. Riverside County EMS Agency monitors influenza-like illness (ILI) year-round for better detection of seasonal or abnormal surges which can impact EMS utilization.

The ILI trigger evaluates electronic patient report (ePCR) data using the following methodology:

1. Filters primary or secondary impression of code J11 (Influenza due to unidentified influenza virus)
OR
2. A primary / secondary impression code J80, J98.09 (Acute respiratory distress syndrome, Respiratory disorder unspecified) with a match in the narrative for ILI, influenza like illness, Flu, Flu-, Flu\., or influenza
OR
3. Any incident with a match in the narrative for ILI, influenza like illness, Flu, Flu-, Flu\., or influenza.

ILI - INFLUENZA-LIKE ILLNESS RESPONSE *(CONT.)*

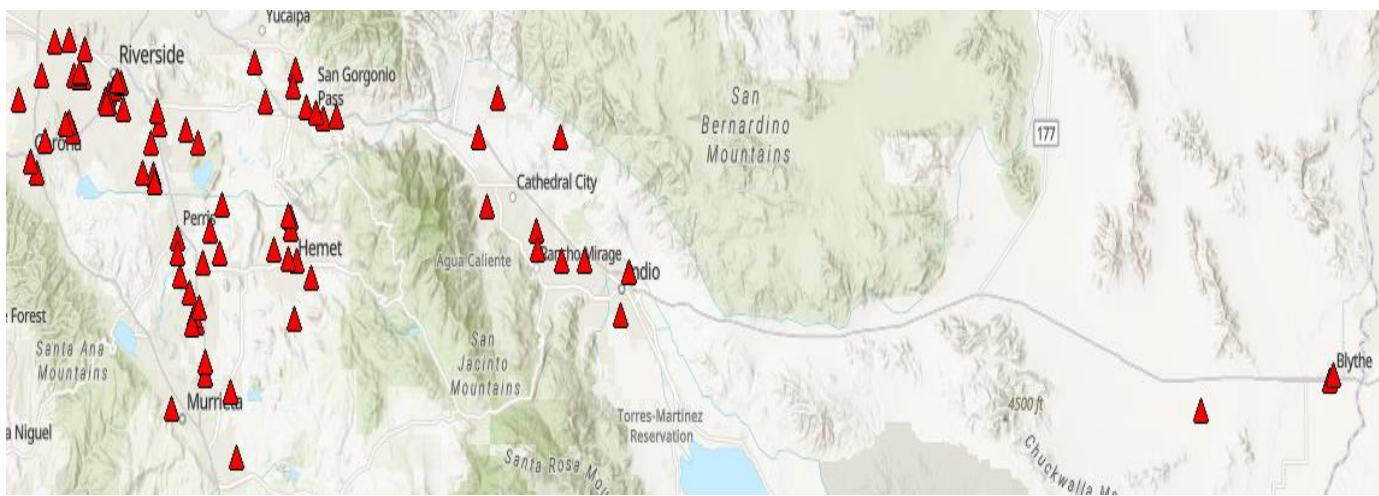
EMS ILI response two standard deviations above the calculated baseline average during non-peak flu seasons is considered a surge in flu activity. For the current Flu season 2020-'21, the standard deviation threshold value is not calculated as there was abnormal non-peak flu season behavior due to COVID-19. The threshold value listed in the graph is based on previous years non-peak flu season. Surges are identified as color levels adapted from the *CDPH Standards and Guidelines for Healthcare Surge During Emergencies* (actual response status for the EMS system may differ):



PUBLIC HEALTH AND MEDICAL SYSTEM STATUS	
Green	The Public Health and Medical System is in usual day-to-day status. Situation resolved; no assistance is required.
Yellow	The Public Health and Medical System is managing the incident using local resources or existing agreements. No assistance is required.
Orange	The Public Health and Medical System requires assistance from within the local jurisdiction/Operational Area.
Red	The Public Health and Medical System requires assistance from outside the local jurisdiction/Operational Area.
Black	The Public Health and Medical System requires significant assistance from outside the local jurisdiction/Operational Area.
Grey	Unknown.

<https://www.cdph.ca.gov/Programs/EPO/CDPH%20Document%20Library/FinalEOM712011.pdf>

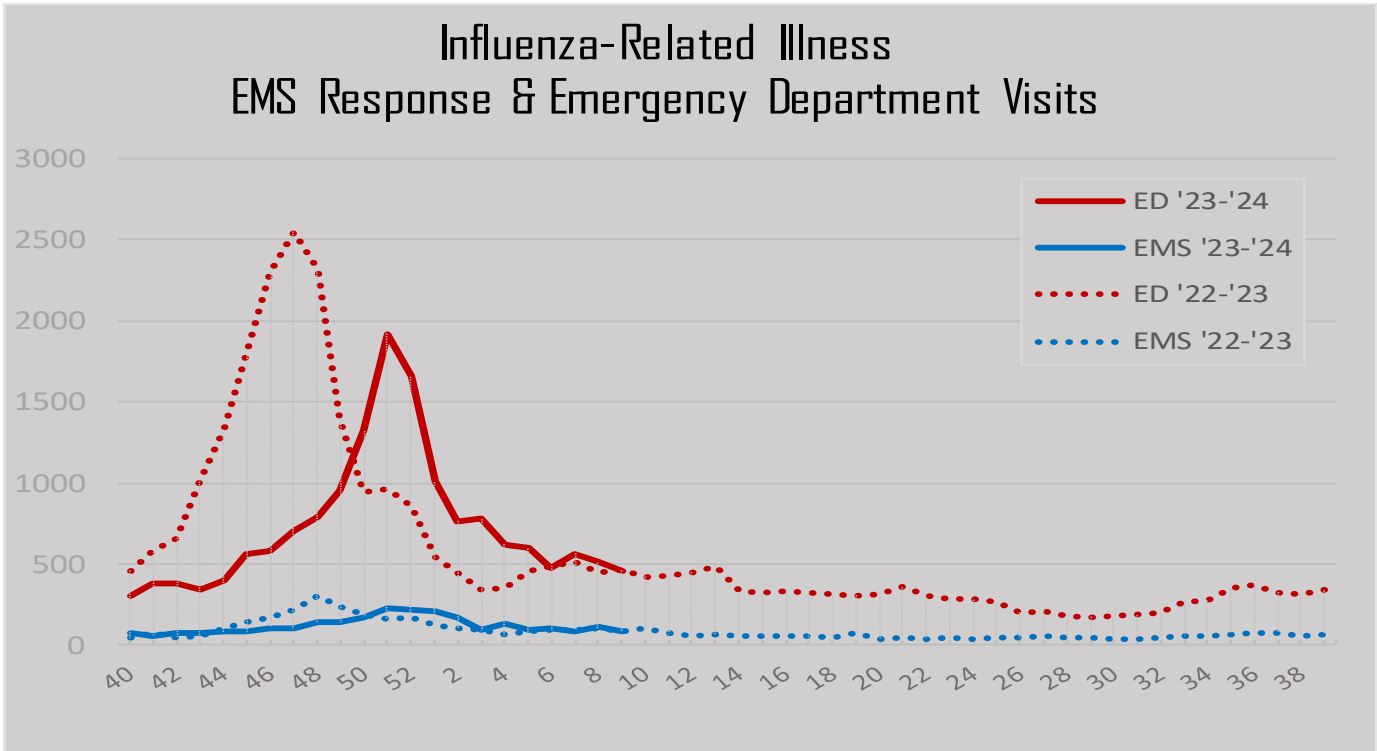
During Week 09, EMS ILI response is ABOVE the TWO (2) standard deviation threshold compared to ILI activity during non-peak flu season levels (weeks 13-39).



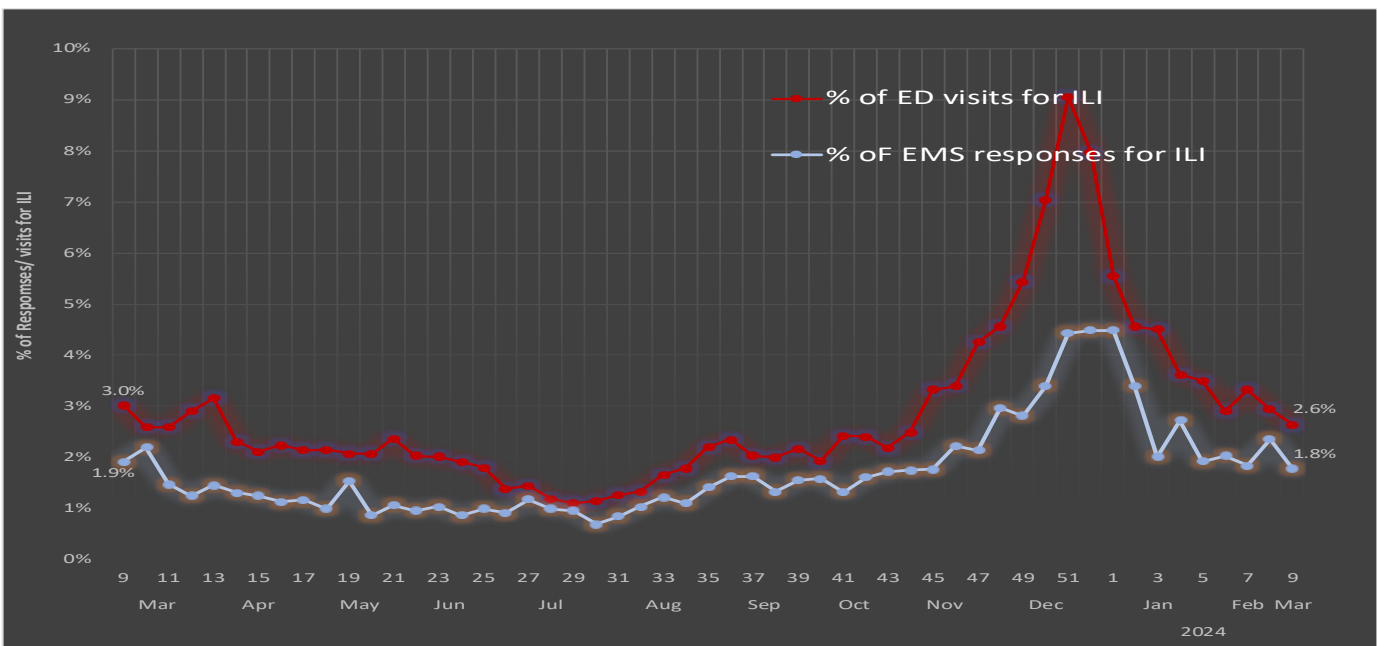
ILI-related EMS response in Riverside County, ePCR distribution map: Week 09

RIVERSIDE COUNTY PUBLIC HEALTH INFLUENZA-LIKE ILLNESS DATA

Riverside County Public Health Department – DOPH collects Emergency Department ILI activity data from the Center for Disease Control’s (CDC) *Early Notification of Community-based Epidemics (ESSENCE)* system as part of the National Syndromic Surveillance Program (NSSP). Sixteen of 17 Riverside County hospitals participate in ESSENCE. The graph below provides a comparison between Riverside County’s EMS ILI responses and Emergency Department (ED) ILI visits for the current year compared to the previous year.



Starting Week 44 2023, Loma Linda Medical center’s data is added to ED volume.



EMS ILI responses and ED ILI visits as a percentage of their respective total volume – adapted from CDC methodology. For Riverside County Public Health Department Influenza Reporting, see <https://www.rivco-diseasecontrol.org/>

APOT AND APOD DEFINITIONS

9-1-1 Ambulance Response

For the purpose of reporting valid, unduplicated response counts, only ground transport units responding to 9-1-1 incidents are included in this report. This excludes records from First Responder Fire Agencies arriving on scene with transport agencies as part of Riverside County's 9-1-1 dual medical response system. It also excludes non-emergency interfacility or other transport types (i.e., air ambulance) where a 30-minute time standard would not apply.

Ambulance Patient Offload Time (APOT)

The time interval between the arrival of a 9-1-1 patient at an Emergency Department (ED) and the time that patient is transferred from the ambulance gurney to a bed, chair, or other acceptable location, and the ED assumes responsibility of care.¹ The Clock Start (eTimes.11) is the time of patient arrival at the destination (hospital), and the Clock Stop (eTimes.12) is the time patient care is transferred.² REMSA obtains both times from the Electronic Patient Care Report (ePCR).

Ambulance Patient Offload Delay (APOD)

Any delay in ambulance patient offload time (APOT) that exceeds the local ambulance patient offload time standard (Riverside County EMS Agency applies a 30-minute standard). This shall also be synonymous with "non-standard patient offload time" as referenced in the Health and Safety Code.³ If the transfer of care and patient offload from the ambulance gurney exceeds the 30-minute standard, it will be documented and tracked as "APOD".⁴ *The Riverside County ePCR system requires medics to enter an "APOD Reason" when APOT exceeds the 30-minute standard. While the number of APODs documented as non-ED-related is nominal, beginning in Week-1 of 2022, only delays identified as having an ED origin are counted against APOD compliance for a more precise metric.*

APOD Compliance

Frequency comparison expressed in percentage between the total number of transports and those resulting in APODs having a documented ED-related origin.

Emergency Treatment Services (ETS) Ambulance Patient Offload Delay (APOD)

Transport to ETS maintains the 30-minute offload standard, however, ETS APOD includes 9-1-1 and interfacility transports (IFTs) as approximately three-quarters of ETS transports are IFTs from other medical facilities.

Additional Data Definitions

Data in this report has been collected from ePCRs (electronic patient care reports) from FirstWatch® and are available after they have been completed by the provider. There is, therefore, an inherent latency to the availability of these records. Due to this latency, subsequent reports may feature slightly different aggregate numbers than earlier reports for the same reporting period. The difference is insignificant (averaging less than .1%) and does not impact overall compliance.

Data in this report includes all transports to the 17 hospitals monitored by REMSA in the respective week relative to the date and time the incident originates (eTimes.03--Dispatch Notified Date/Time). For example, if an incident originates on day-7 of the current reporting week, and the patient is subsequently transferred to the care of an emergency department after midnight which falls on day-1 of the subsequent week, that incident will be included in the current reporting week.

-For inquiries, please contact Riverside County Emergency Management Department (EMD), EMS Agency (951) 358-5029

-Current report prepared by Sudha Mahesh & Catherine Borna Farrokhi, EMD, EMS Agency

¹ Health and Safety Code Division 2.5, Chapter 3, Article 1, Section 1797.120(b)

² Ambulance Patient Offload Time (APOT) Standardized Methods for Data Collection and Reporting, approved by EMS Commission 12/14/2016. https://emsa.ca.gov/wp-content/uploads/sites/71/2017/09/APOT-Methodology_Guidance-2016.pdf

³ Ibid., APOT-1 Specifications

⁴ REMSA Policy 4109, Transfer of Patient Care. <https://www.remsa.us/policy/4109.pdf>

⁷ Calkins MM, Isaksen TB, Stubbs BA, Yost MG, Fenske RA (2016). Impacts of extreme heat on emergency medical service calls in King County, Washington, 2007-2012: relative risk and time series analyses of basic and advanced life support. *Environ Health*. doi: 10.1186/s12940-016-0109-0

⁸ Sheridan SC, Kalkstein AM, Kalkstein LS (2009). Trends in heat-related mortality in the United States, 1975–2004. *Natural Hazards* 50:1, 145-160

⁹ Guo Y, Gasparrini A, Armstrong BG (2017). Heat Wave and Mortality: A Multicountry, Multicommunity Study. *Environ Health Perspect*. 2017;125(8):087006. doi:10.1289/EHP1026

¹⁰ CDC, Climate and Health Program. 2010. <https://www.cdc.gov/climateandhealth/effects/default.htm>