

EMCC Members Per Board of Supervisors  
Resolution No. 2001-358:

PMAC Physician Representative

1.a. Stephen Patterson, MD

Hospital Association Representative (ex-officio)

1.b. Dimitrios Alexiou

Riverside County Medical Association

1.c. Deepak Chandwan, MD

Riverside County Ambulance Association

1.d. Peter Hubbard

Riverside County Fire Chiefs' Association

1.e. Jason Keeling

Coachella Valley Association of Governments

1.f. Mike Marlow

Western Riverside Council of Governments

1.g. Grant Yates

Riv Co Law Enforcement Agency Admin Assoc

1.h. Tom McCreary

PMAC Prehospital Representative

1.i. Jim Price

Riverside Co Fire Dept Rep (ex-officio)

1.j. Phil Rawlings

Supervisorial District One

1.k. Tom McEntee

Supervisorial District Two

1.k. Stan Grube

Supervisorial District Three

1.k. Mike Norris

Supervisorial District Four

1.k. Blake Goetz

Supervisorial District Five

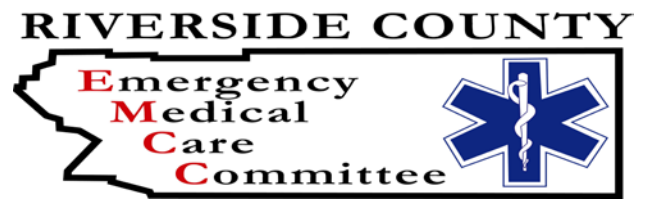
1.k. Kent McCurdy

**The next meeting of the EMCC is on:**

**Wednesday, January 16, 2013**  
**9:00AM – 11:00AM**

**Riverside County Regional Medical Center**  
**26520 Cactus Avenue, Moreno Valley**  
**Rooms A1017 and A1019**  
**951/358-5029**

1. CALL TO ORDER  
Chair—Stan Grube
2. ROUNDTABLE INTRODUCTIONS (3 Minutes)  
Chair—Stan Grube
3. APPROVAL OF MINUTES  
October 3, 2012 Minutes (Attachment A)
4. EMS AGENCY REPORT (30 Minutes)  
5.1 ED Wait Times—Trevor Douville (Handout)  
5.2 EMS System Evaluation—Bruce Barton
5. OTHER REPORTS (30 Minutes)  
6.1 PMAC— Steven Patterson, MD / Jim Price  
6.2 PHEPR Branch—Kim Saruwatari  
6.3 EMS System Performance Indicators—Jason Keeling / Bruce Barton  
6.4 Board of Supervisors Resolution for EMCC Membership—Brian MacGavin
6. NEW BUSINESS (15 Minutes)  
7.1 Annual EMS Policy Manual Update—Scott Moffatt (Attach. B)  
7.2 Membership Term Dates—Brian MacGavin (Attachment C)  
7.3 Chair and Vice Chair Elections—Stan Grube
7. Open Discussion / Public Comment (10 Minutes)
8. Next Meeting / Adjournment (1 Minute)  
April 3, 2013



**NOTICE: Items on the agenda:** Any member of the public may address this meeting of the Emergency Medical Care Committee or any items appearing on the agenda by raising their hand to be recognized by the Chair or acting Committee Chairperson. If a member of the public desires to speak, they must do this before or anytime during discussion of the item. All comments are to be directed to the Emergency Medical Care Committee and shall not consist of any personal attacks. Members of the public are expected to maintain a professional, courteous decorum during their comments. A three-minute limitation shall apply to each member of the public, unless the Chair extends such time. No member of the public shall be permitted to "share" his/her three minutes with any other member of the public.

**Items not on the agenda:** Any member of the public may address this meeting of the Emergency Medical Care Committee on any item that does not appear on the agenda, but is of interest to the general public and is an item upon which the Committee may act. All comments are to be directed to the Emergency Medical Care Committee and shall not consist of any personal attacks. Members of the public are expected to maintain a professional, courteous decorum during their comments. A three-minute limitation shall apply to each member of the public who wishes to address the Committee on a matter not on the agenda. No member of the public shall be permitted to "share" his/her three minutes with any other member of the public. (Usually, any items received under this heading are referred to the staff for further study, research, completion, and/or future Committee action.)

It is the responsibility of the members of the committee to disseminate information from EMCC meetings to the organizations they represent. Any questions regarding meeting or agenda items may be addressed to Brian MacGavin, Assistant EMS Director, Riverside County EMS Agency at (951) 358-5029. **Next meeting:** **Wednesday, January 16, 2013, 9:00 AM - 11:00 AM, Riverside County Regional Medical Center.** EMCC agendas with attachments are available online at [www.rivcoems.org](http://www.rivcoems.org)

The County of Riverside does not discriminate on the basis of disability in admission to, access to, or operations of its programs, services or activities. It is committed to ensuring that its programs, services, and activities are fully accessible to and usable by people with disabilities. If you have a disability and need assistance, contact Brian MacGavin at (951) 358-5029.

TOPIC	DISCUSSION	ACTION
1. CALL TO ORDER		Chair Stan Grube called the meeting to order at 9:00 AM.
2. ROUNDTABLE INTRODUCTIONS		Roundtable self introductions were performed.
3. RECOGNITION – Brian MacGavin	<p>Recognitions were awarded to:</p> <p>Brian Steiger, Cal Fire            Darrell Anderson, Cal Fire            Dean Alverson, Cal Fire            James Magana, AMR            Ryan Trobraugh, AMR            Robert Beeson, Cal Fire            Jose Rodriguez, Cal Fire            Kyle Wilmore, Cal Fire            Jason Rutzinger, Cal Fire            Dean Anderson, Cal Fire            John Linzalone, Cal Fire            Rodrigo Vega, Cal Fire            Matt Adams, Cal Fire            Steve Stock, Cal Fire            Matt Franklin, Cal Fire</p>	Information only.
4. APPROVAL OF MINUTES		The minutes from the last EMCC meeting on July 12, 2012 were approved without changes.
5. EMS AGENCY REPORT		
5.1 ED Wait Times – Trevor Douville	<p>Trevor Douville presented the Ambulance ED Wait Time Data report. June’s wait times, were slightly lower than May’s. Total wait times have increased for July and August and there have been over 15,000 bed delay occurrences from January to August 2012. REMSA will continue to contact those hospitals that have excessive ambulance wait times. Parkview Community Hospital has recently implemented a plan to decrease their ambulance wait time hours; we are anxious to see what their wait times will be for September and October 2012.</p>	Information only.

	<p>Bruce Barton stated the Prehospital Receiving Centers Policy is being developed that will address wait times. This policy will have four goals:</p> <ol style="list-style-type: none"> <li>1. Establish a metric for freeing up ambulances.</li> <li>2. Establish each emergency department's capability to treat patients arriving by ambulances.</li> <li>3. Establish submission for outcome data.</li> <li>4. Have provisions for non-compliance.</li> </ol>	
<p><b>5.2 EMS System Evaluation Project - Bruce Barton</b></p>	<p>In June 2012, the Board of Supervisors gave direction to hire a vendor for the evaluation of the EMS system prior to securing a Countywide ambulance provider agreement by June 2014.</p> <p>REMSA has hired Michael Dickey, Contract and Grants Analyst, to assist REMSA with the coordination of the system evaluation project.</p>	Information only.
<p><b>6. OTHER REPORTS</b></p>		
<p><b>6.1 PMAC – Stephen Patterson</b></p>	<p>The changes to Policy 6101, (Prehospital Receiving Centers) will require extending the 30-day comment period for this policy to October 24, 2012.</p>	Information only.
<p><b>6.2 PHEPR Branch – Britta Barton</b></p>	<p>Kim Saruwatari reported that PHEPR branch has acquired three field treatment site caches through the Urban Areas Security Initiative (UASI) grant. The Desert, Southern and Western regions of the County are being considered for storage locations.</p> <p>For November 7, there will be a Tabletop Exercise for the Statewide Medical Health</p>	Information only.

	<p>Disaster Exercise, followed by a full scale exercise on November 15. The scenario will be an Earthquake with Power Failure; PHEPR Branch will be coordinating Riverside County's Response.</p> <p>A National Disaster Medical System (NDMS) walk through is scheduled for November 14, 2012 at March Air Force Base to determine resources needed for receiving patients for NDMS purposes.</p>	
<b>6.3 County EMD System - James Lee</b>	Riverside County Fire Department's EMD program was approved on August 2, 2012.	Information only.
<b>6.4 Annual Report to the Board - Brian MacGavin</b>	The final draft of the report has been submitted to EMCC members. (Attachment C to October 3 agenda).	EMCC approved of submitting the annual report to the Board of Supervisors.
<b>6.5 EMS Plan Update – Brian MacGavin</b>	The EMS Plan Update 30-day comment period ended on August 27, 2012. REMSA will be submitting the update to the State EMS Authority, with additional information requesting for their consideration for Pass Zone exclusivity.	Information only.
<b>6.6 EMS System Performance Indicators – Bruce Barton</b>	There has not been much progress on this project. The upcoming EMS system evaluation project should include EMS system performance indicator recommendations. There will be more discussion at the next EMCC meeting.	Information only.
<b>6.7 Draft BOS EMCC Resolution - Blake Goetz</b>	<p>Three changes are recommended to the draft Resolution:</p> <p>1. Line 22-d. One representative from the County contracted Ground Ambulance provider that serves a majority of the County's</p>	EMCC approved of the proposed changes to the EMCC resolution for submission to the Board of Supervisors.

	<p>Exclusive Operating Areas.</p> <p>2. Line 1-e. One representative from the Ambulance Association of Riverside County nominated by that organization.</p> <p>3. Line 3-f. One representative from the County's Permitted Air Ambulance providers nominated by Permitted Air Ambulance providers.</p>	
<b>7.1 NEW BUSINESS</b>		
<b>7.1 Membership Status – Brian MacGavin</b>	<p>Brian MacGavin spoke with Earl Moss of Cathedral City PD. He said that he would likely be nominated by The Riverside County Law Enforcement Administrations Association (RCLEAA) to be their representative on EMCC.</p> <p>Deepak Chandwani, MD will be representing the Riverside County Medical Association and Tom McEntee will be the representative for District One.</p>	<p>Stan Grube requested the list of names and expiration dates of EMCC members be distributed at the next EMCC meeting.</p>
<b>8. OPEN DISCUSSION / PUBLIC COMMENT</b>	<p>No discussion or comments were provided</p>	
<b>9. NEXT MEETING / ADJOURNMENT</b>		<p>January 16, 2013.</p>

## FOR CONSIDERATION BY EMCC

DATE: January 8, 2013  
TO: EMCC  
FROM: Scott Moffatt, EMS Specialist  
SUBJECT: 2013 Policy Manual

In accord with REMSA Policy 8301, the 2013 Policy Manual was completed on December 19, 2012, and is available at:

<http://www.remsa.us/policy/2013/>

We ask that you familiarize yourself with the 2013 Policy Manual. Additionally, EMS organizations operating in Riverside County will need to ensure that their employees have been updated, operational adjustments made, and that they are able to comply when the new policies go into effect on April 1, 2013.

We anticipate that you will have questions and may find issues in the 2013 Policy Manual that need to be resolved. To guide you through the 2013 Policy Manual we have included a presentation that you may find useful: *9104 Changes for 2013*. Note that the last 12 pages of 9104 include the presentation's text in outline format. The presentation is not comprehensive and serves only as a guide to your review of the policies themselves. Also, *9103 Ready to Print* has been provided for those that find it useful to view the manual as a single PDF file.

Please feel free to contact us with your questions and issues. We appreciate your participation in our annual policy review process and hope that the 2013 Policy Manual will serve you well.

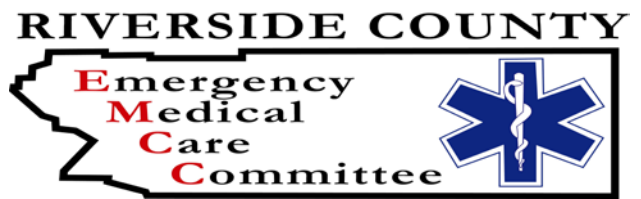
**ACTION:** Familiarize yourself with the 2013 Policy Manual, ensure that your employees have been updated, ensure that operational adjustments have been made, and prepare for implementation on April 1, 2013.

## EMERGENCY MEDICAL CARE COMMITTEE (EMCC) MEMBERSHIP EXPIRATION DATES

NAME	REPRESENTATION	TERM EXPIRES
Thomas McEntee	District 1 (Bob Buster)	6/30/2014
Stan Grube (Chair)	District 2 (John Tavaglione)	6/30/2014
Michael Norris	District 3 (Jeff Stone)	6/30/2014
Blake Goetz	District 4 (John Benoit)	6/30/2014
Kent McCurdy	District 5 (Marion Ashley)	6/30/2015
Stephen Patterson, MD	Prehospital Medical Advisory Committee	6/30/2015
Mike Marlow	Coachella Valley Association of Governments	6/30/2013
Grant Yates	Western Riverside Council of Governments	6/30/2013
Tom McCreary	Riverside County Law Enforcement Agency Administrators Association	6/30/2013
Deepak Chandwan, MD	Riverside County Medical Association	6/30/2015
Jason Keeling	Riverside County Fire Chiefs' Association	6/30/2015
Jim Price	Prehospital Medical Advisory Committee (PMAC)	6/30/2013
Pending	Air Ambulance Provider Representative	6/30/2016
Kelly Martinez (Pending)	Ambulance Association of Riverside County	6/30/2016
Peter Hubbard (Pending)	Majority EOA Ground Ambulance Provider Rep.	Ex-officio
Dimitrious Alexiou	Hospital Association of Southern California, Inland Empire	Ex-officio
Phil Rawlings	Riverside County Fire Department	Ex-officio

Updated: 11/26/12





**The next meeting of the EMCC is on:**

**Wednesday, January 16, 2013  
9:00AM – 11:00AM**

**Riverside County Regional Medical Center  
26520 Cactus Avenue, Moreno Valley  
Rooms A1017 and A1019  
951/358-5029**

EMCC Members Per Board of Supervisors  
Resolution No. 2001-358:

PMAC Physician Representative

1.a. Stephen Patterson, MD

Hospital Association Representative (ex-officio)

1.b. Dimitrios Alexiou

Riverside County Medical Association

1.c. Deepak Chandwan, MD

Riverside County Ambulance Association

1.d. Peter Hubbard

Riverside County Fire Chiefs' Association

1.e. Jason Keeling

Coachella Valley Association of Governments

1.f. Mike Marlow

Western Riverside Council of Governments

1.g. Grant Yates

Riv Co Law Enforcement Agency Admin Assoc

1.h. Tom McCreary

PMAC Prehospital Representative

1.i. Jim Price

Riverside Co Fire Dept Rep (ex-officio)

1.j. Phil Rawlings

Supervisorial District One

1.k. Tom McEntee

Supervisorial District Two

1.k. Stan Grube

Supervisorial District Three

1.k. Mike Norris

Supervisorial District Four

1.k. Blake Goetz

Supervisorial District Five

1.k. Kent McCurdy

1. CALL TO ORDER

Chair—Stan Grube

2. ROUNDTABLE INTRODUCTIONS (3 Minutes)

Chair—Stan Grube

3. APPROVAL OF MINUTES

October 3, 2012 Minutes (Attachment A)

4. EMS AGENCY REPORT (30 Minutes)

4.1 ED Wait Times—Trevor Douville (Handout)

4.2 EMS System Evaluation—Bruce Barton

5. OTHER REPORTS (30 Minutes)

5.1 PMAC— Steven Patterson, MD / Jim Price

5.2 PHEPR Branch—Kim Saruwatari

5.3 EMS System Performance Indicators—Jason Keeling / Bruce Barton

5.4 Board of Supervisors Resolution for EMCC Membership—Brian MacGavin

6. NEW BUSINESS (15 Minutes)

6.1 Annual EMS Policy Manual Update—Scott Moffatt (Attach. B)

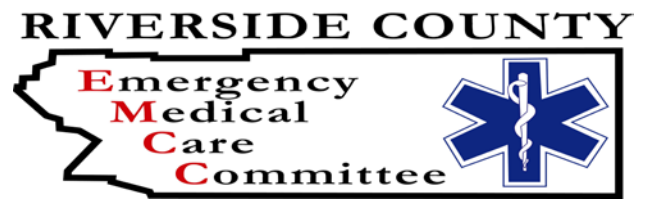
6.2 Membership Term Dates—Brian MacGavin (Attachment C)

6.3 Chair and Vice Chair Elections—Stan Grube

7. Open Discussion / Public Comment (10 Minutes)

8. Next Meeting / Adjournment (1 Minute)

April 3, 2013



**NOTICE: Items on the agenda:** Any member of the public may address this meeting of the Emergency Medical Care Committee or any items appearing on the agenda by raising their hand to be recognized by the Chair or acting Committee Chairperson. If a member of the public desires to speak, they must do this before or anytime during discussion of the item. All comments are to be directed to the Emergency Medical Care Committee and shall not consist of any personal attacks. Members of the public are expected to maintain a professional, courteous decorum during their comments. A three-minute limitation shall apply to each member of the public, unless the Chair extends such time. No member of the public shall be permitted to "share" his/her three minutes with any other member of the public.

**Items not on the agenda:** Any member of the public may address this meeting of the Emergency Medical Care Committee on any item that does not appear on the agenda, but is of interest to the general public and is an item upon which the Committee may act. All comments are to be directed to the Emergency Medical Care Committee and shall not consist of any personal attacks. Members of the public are expected to maintain a professional, courteous decorum during their comments. A three-minute limitation shall apply to each member of the public who wishes to address the Committee on a matter not on the agenda. No member of the public shall be permitted to "share" his/her three minutes with any other member of the public. (Usually, any items received under this heading are referred to the staff for further study, research, completion, and/or future Committee action.)

It is the responsibility of the members of the committee to disseminate information from EMCC meetings to the organizations they represent. Any questions regarding meeting or agenda items may be addressed to Brian MacGavin, Assistant EMS Director, Riverside County EMS Agency at (951) 358-5029. **Next meeting:** **Wednesday, January 16, 2013, 9:00 AM - 11:00 AM, Riverside County Regional Medical Center.** EMCC agendas with attachments are available online at [www.rivcoems.org](http://www.rivcoems.org)

The County of Riverside does not discriminate on the basis of disability in admission to, access to, or operations of its programs, services or activities. It is committed to ensuring that its programs, services, and activities are fully accessible to and usable by people with disabilities. If you have a disability and need assistance, contact Brian MacGavin at (951) 358-5029.



# AMBULANCE ED WAIT TIME DATA

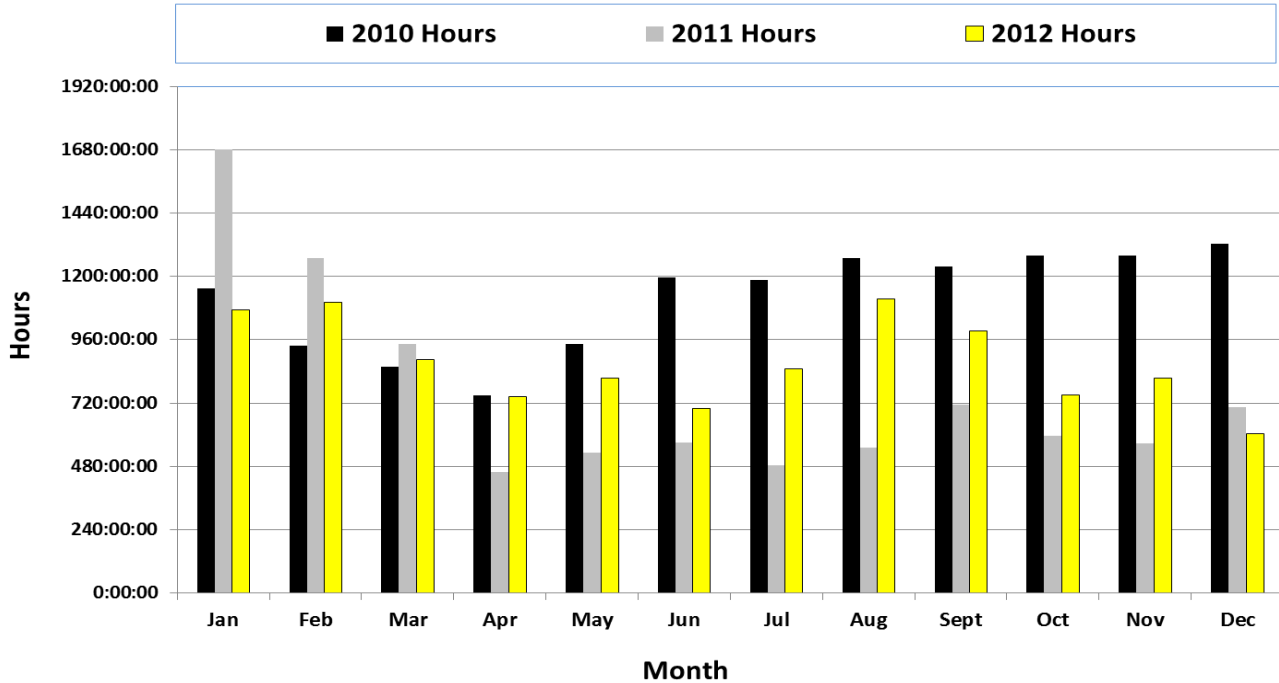
January 16, 2013

EMCC Report

# RIVERSIDE COUNTY AMBULANCE ED WAIT TIME HOURS

Data provided illustrates total ambulance ED wait time hours by month for 2010-2012 by hospitals, within Riverside County. To qualify for this chart the duration of the “Bed Delay” (BD) occurrence must be greater than 25 minutes and only the time period after the first 25 minutes is summed.

**Riverside County Monthly Ambulance Wait Time Hours (2010-2012)**



Prepared By: TDouville Riverside County EMS Agency

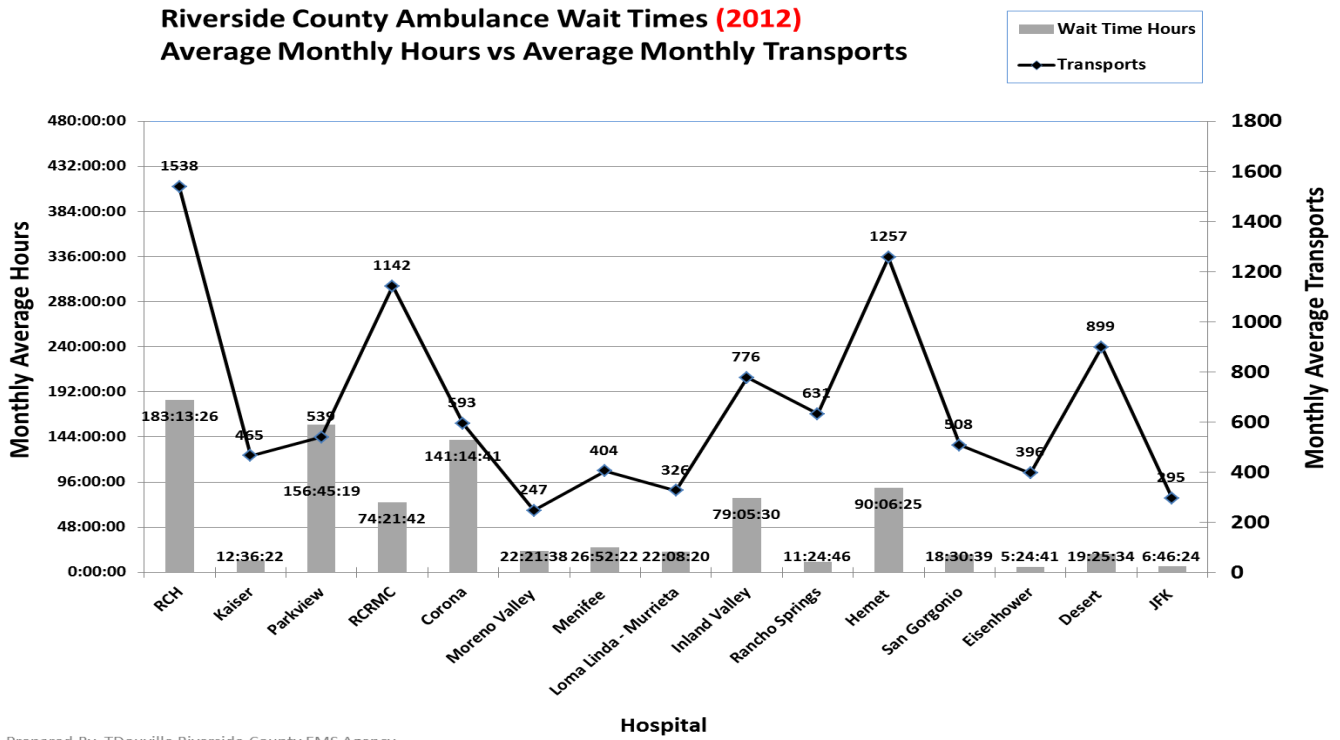
## Total Hours\* and “Bed Delay” (BD) Occurrences by hospital, Riverside County, 2010-2012

Hospital	2010		2011		2012	
	Total Hours*	Bed Delay Occurrence	Total Hours*	Bed Delay Occurrence	Total Hours*	Bed Delay Occurrence
RCH	4492:02:14	8936	1571:42:46	3352	2198:41:11	3953
Kaiser	228:13:15	779	173:06:25	559	151:16:22	472
Parkview	1408:19:41	2616	1371:19:18	2435	1881:03:47	2833
RRCMC	459:22:28	1390	545:44:19	1535	892:20:22	2276
Corona	1649:46:36	2634	1539:56:42	2550	1694:56:09	2803
Moreno Valley	258:15:33	924	285:04:10	824	268:19:32	809
Menifee	621:54:58	1542	568:04:22	1210	322:28:21	791
Loma Linda – Murrieta	NA	NA	61:57:57	179	265:40:04	675
Inland Valley	1772:47:13	3763	879:15:32	1671	949:05:59	2134
Rancho Springs	1253:45:23	2908	577:15:19	1209	136:57:10	417
Hemet	939:40:28	1542	1060:21:22	2980	1081:16:55	2720
San Geronio	145:19:45	3763	215:17:12	568	222:07:47	595
Eisenhower	23:06:49	114	33:56:41	171	64:56:15	320
Desert	102:38:56	412	122:26:14	562	233:06:47	788
JFK	63:07:19	310	65:48:08	296	81:16:43	337

\*Total Hours do not include the first 25 minutes of each “Bed Delay” Occurrence.

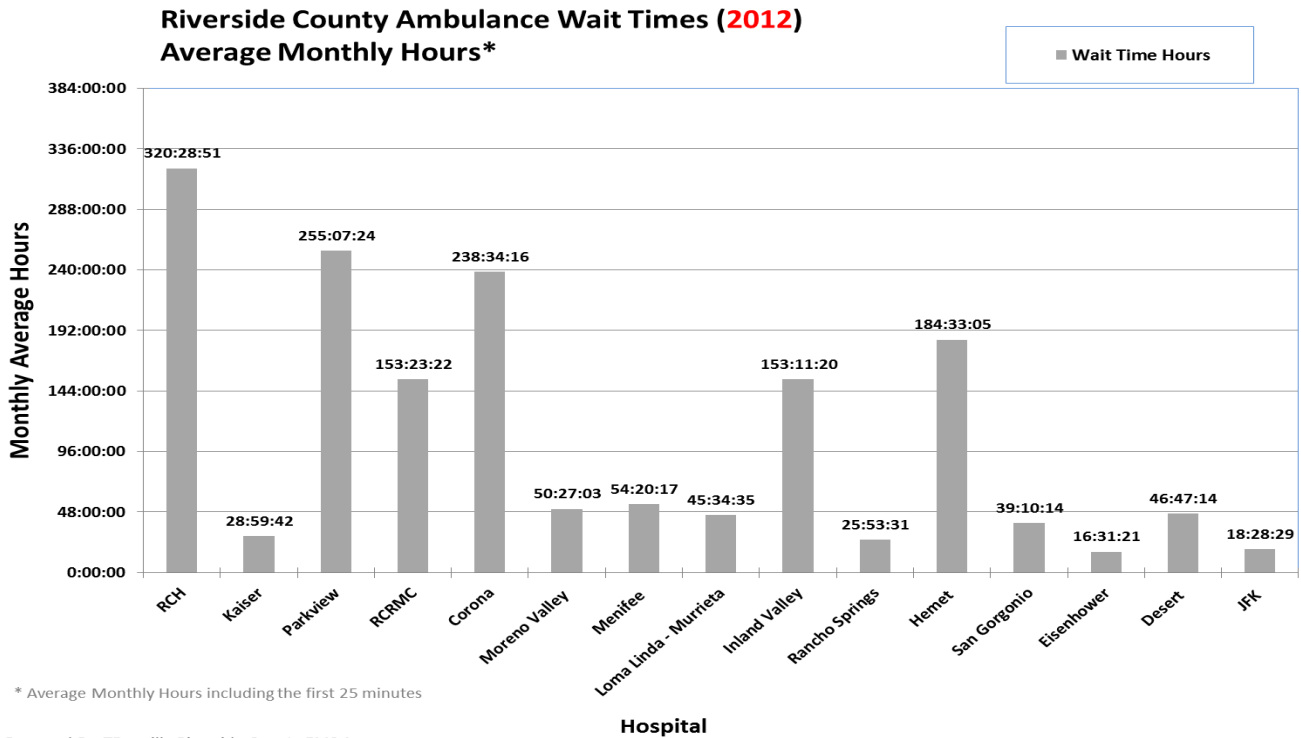
# AVERAGE MONTHLY HOURS VS AVERAGE MONTHLY TRANSPORTS

Average monthly hours and average incoming ALS Ambulance transports. To qualify for these charts the duration of the "Bed Delay" (BD) occurrence must be greater than 25 minutes and only the time period after the first 25 minutes is summed.



# AVERAGE MONTHLY HOURS – RAW

Average monthly hours; to qualify for these charts the duration of the "Bed Delay" (BD) occurrence must be greater than 25 minutes and the entire time period is summed, including first 25 minutes.



## Ambulance ED Wait Time Data 2012

Hospital	Total Hours*	Total Hours Raw**	Total ALS Transports	Bed Delay (BD) Occurrence	Compliance%***	Avg Delay/ BD Occurrence**
RCH	2198:41:11	2878:56:33	18455	3953	79%	0:58:22
Kaiser	151:16:22	223:49:31	5577	472	92%	0:44:14
Parkview	1881:03:47	2467:24:17	6463	2833	56%	1:04:50
RCRMC	892:20:22	1325:26:55	13706	2276	83%	0:48:31
Corona	1694:56:09	1957:18:00	7117	2803	61%	1:01:17
Moreno Valley	268:19:32	411:52:57	2958	809	73%	0:44:54
Menifee	322:28:21	361:52:34	4846	791	84%	0:49:28
LLUMC –Murrieta	265:40:04	305:43:29	3906	675	83%	0:48:37
Inland Valley	949:05:59	1239:03:47	9316	2134	77%	0:51:41
Rancho Springs	136:57:10	183:46:30	7577	417	94%	0:44:42
Hemet	1081:16:55	1464:13:54	15080	2720	82%	0:48:51
San Geronio	222:07:47	384:11:46	6094	595	90%	0:47:24
Eisenhower	64:56:15	126:17:22	4753	320	93%	0:37:11
Desert	233:06:47	445:33:54	10787	788	93%	0:42:45
JFK	81:16:43	155:38:30	3534	337	90%	0:39:28
<b>Totals</b>	<b>10,443:33:24</b>	<b>13,931:09:59</b>	<b>120,169</b>	<b>21,923</b>	<b>82%</b>	<b>0:53:35</b>

\*Total Hours does not include the first 25 minutes of each "Bed Delay" Occurrence.

\*\* Total Hours Raw includes the first 25 minutes of each "Bed Delay" Occurrence.

\*\*\* Compliance% represents the percentage of ALS Ambulance Transport not on Bed Delay.

## Ambulance ED Wait Time **Total Monthly Hours\*** - 2012 (August – December)

Hospital	August	September	October	November	December
RCH	230:29:26	186:52:15	219:56:18	173:45:00	141:41:05
Kaiser	13:09:04	19:43:25	9:32:06	9:48:33	13:47:47
Parkview	176:03:10	145:24:50	53:31:45	92:39:20	43:43:35
RCRMC	90:40:02	68:12:09	62:34:44	66:14:29	48:12:05
Corona	229:17:26	183:03:02	113:01:18	157:37:17	102:16:32
Moreno Valley	29:17:57	28:33:31	21:43:24	19:04:12	17:30:28
Menifee	23:12:30	47:25:24	36:01:34	36:37:09	30:06:40
LLUMC –Murrieta	32:17:55	40:22:28	26:30:38	24:22:46	30:45:43
Inland Valley	139:46:09	95:40:09	72:15:23	82:20:36	51:26:04
Rancho Springs	20:52:04	20:31:04	15:15:22	11:04:36	8:49:38
Hemet	88:55:42	109:06:39	81:05:00	104:56:38	78:34:44
San Geronio	17:24:38	18:09:05	6:01:02	5:49:57	9:10:57
Eisenhower	7:02:35	4:36:18	7:01:16	7:52:17	2:54:02
Desert	12:15:45	19:20:50	17:42:41	16:06:45	18:57:37
JFK	3:27:41	7:06:19	7:35:24	6:51:11	6:10:19
<b>Totals</b>	<b>1,114:12:04</b>	<b>994:07:28</b>	<b>749:47:55</b>	<b>815:10:46</b>	<b>604:07:16</b>

\*Total Monthly Hours does not include the first 25 minutes of each "Bed Delay" Occurrence.

Data for this report was provided by American Medical Response (AMR) to the Riverside County EMS Agency for review and analysis. The data represents only AMR 911/ ALS resources and does not include any other ambulance companies.